

INTERNATIONAL fpa SUBPLATE/MANIFOLD REFERENCE



MANIFOLD PARALLEL

IFP PART NUMBER	SIZE/DESCRIPTION
MFB-03-2-10N	03-3/8" NPT 2 STATION PAR.
MFB-03-3-10N	03-3/8" NPT 3 STATION PAR.
MFB-03-4-10N	03-3/8" NPT 4 STATION PAR.
MFB-03-5-10N	03-3/8" NPT 5 STATION PAR.
MFB-03-6-10N	03-3/8" NPT 6 STATION PAR.
MFB-03-2-10S	03-3/8" SAE 2 STATION PAR.
MFB-03-3-10S	03-3/8" SAE 3 STATION PAR.
MFB-03-4-10S	03-3/8" SAE 4 STATION PAR.
MFB-03-5-10S	03-3/8" SAE 5 STATION PAR.
MFB-03-6-10S	03-3/8" SAE 6 STATION PAR.
MFB-05-2-10N	05-1/2" NPT 2 STATION PAR.
MFB-05-3-10N	05-1/2" NPT 3 STATION PAR.
MFB-05-4-10N	05-1/2" NPT 4 STATION PAR.
MFB-05-5-10N	05-1/2" NPT 5 STATION PAR.
MFB-05-6-10N	05-1/2" NPT 6 STATION PAR.
MFB-05-2-10S	05-1/2" SAE 2 STATION PAR.
MFB-05-3-10S	05-1/2" SAE 3 STATION PAR.
MFB-05-4-10S	05-1/2" SAE 4 STATION PAR.
MFB-05-5-10S	05-1/2" SAE 5 STATION PAR.
MFB-05-6-10S	05-1/2" SAE 6 STATION PAR.

SUBPLATE

IFP PART NUMBER	SIZE/DESCRIPTION
DGSP03N-6	03-NPT 3/8" NPT BOTTOM PORT
DGSP03N-6E	03-NPT 3/8" NPT SIDE PORT
DGSP03S-6	03-SAE 3/8" SAE BOTTOM PORT
DGSP03S-6E	03-SAE 3/8" SAE SIDE PORT
DGSP03N-8	03-NPT 1/2" NPT BOTTOM PORT
DGSP03N-8E	03-NPT 1/2" NPT SIDE PORT
DGSP03S-8	03-SAE 1/2" SAE BOTTOM PORT
DGSP03S-8E	03-SAE 1/2" SAE SIDE PORT
DGSP05N-8	05-NPT 1/2" NPT BOTTOM PORT
DGSP05N-8E	05-NPT 1/2" NPT SIDE PORT
DGSP05S-8	05-SAE 1/2" SAE BOTTOM PORT
DGSP05S-8E	05-SAE 1/2" SAE SIDE PORT
DGSP05N-12	05-NPT 3/4" NPT BOTTOM PORT
DGSP05N-12E	05-NPT 3/4" NPT SIDE PORT
DGSP05S-12	05-SAE 3/4" SAE BOTTOM PORT
DGSP05S-12E	05-SAE 3/4" SAE SIDE PORT
DGSP07N-12	07-NPT 3/4" NPT BOTTOM PORT
DGSP07N-12E	07-NPT 3/4" NPT SIDE PORT
DGSP07S-12	07-SAE 3/4" SAE BOTTOM PORT
DGSP07S-12E	07-SAE 3/4" SAE SIDE PORT
DGSP07N-16	07-NPT 1" NPT BOTTOM PORT
DGSP07N-16E	07-NPT 1" NPT SIDE PORT
DGSP07S-16	07-SAE 1" SAE BOTTOM PORT
DGSP07S-16E	07-SAE 1" SAE SIDE PORT
DGSP08N-12	08-NPT 3/4" NPT BOTTOM PORT
DGSP08N-12E	08-NPT 3/4" NPT SIDE PORT
DGSP08S-12	08-SAE 3/4" SAE BOTTOM PORT
DGSP08S-12E	08-SAE 3/4" SAE SIDE PORT
DGSP08N-16	08-NPT 1" NPT BOTTOM PORT
DGSP08N-16E	08-NPT 1" NPT SIDE PORT
DGSP08S-16	08-SAE 1" SAE BOTTOM PORT
DGSP08S-16E	08-SAE 1" SAE SIDE PORT

SERIES

IFP PART NUMBER	SIZE/DESCRIPTION
MFS-03-2-10N	03-3/8" NPT 2 STATION SERIES
MFS-03-3-10N	03-3/8" NPT 3 STATION SERIES
MFS-03-4-10N	03-3/8" NPT 4 STATION SERIES
MFS-03-2-10S	03-3/8" SAE 2 STATION SERIES
MFS-03-3-10S	03-3/8" SAE 3 STATION SERIES
MFS-03-4-10S	03-3/8" SAE 4 STATION SERIES
MFS-05-2-10N	05-1/2" NPT 2 STATION SERIES
MFS-05-3-10N	05-1/2" NPT 3 STATION SERIES
MFS-05-4-10N	05-1/2" NPT 4 STATION SERIES
MFS-05-2-10S	05-1/2" SAE 2 STATION SERIES
MFS-05-3-10S	05-1/2" SAE 3 STATION SERIES
MFS-05-4-10S	05-1/2" SAE 4 STATION SERIES

(OPTIONAL METRIC/BSP PORT AVAILABLE)

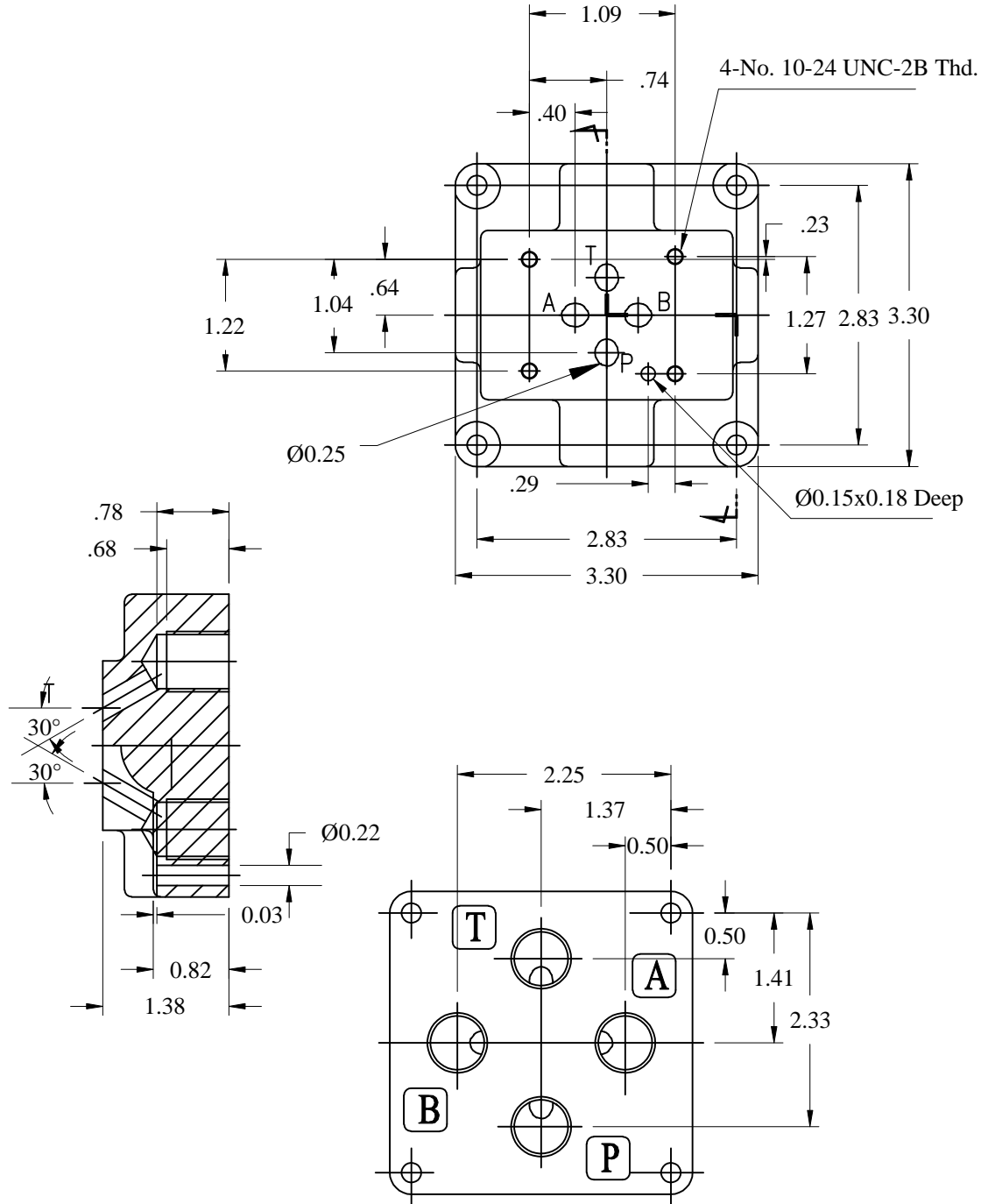
(OTHER LENGTHS AVAILABLE ON REQUEST)

IFP DGSP03 SUBPLATES (Bottom Port)



DIMENSIONS (inches)

MATERIAL : STEEL CASTING



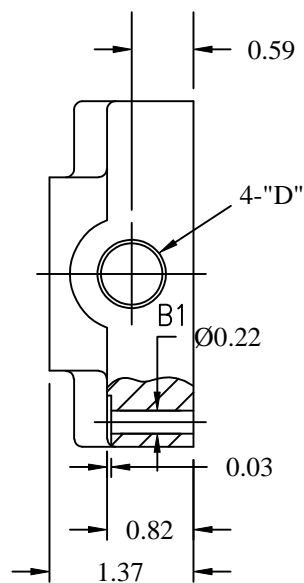
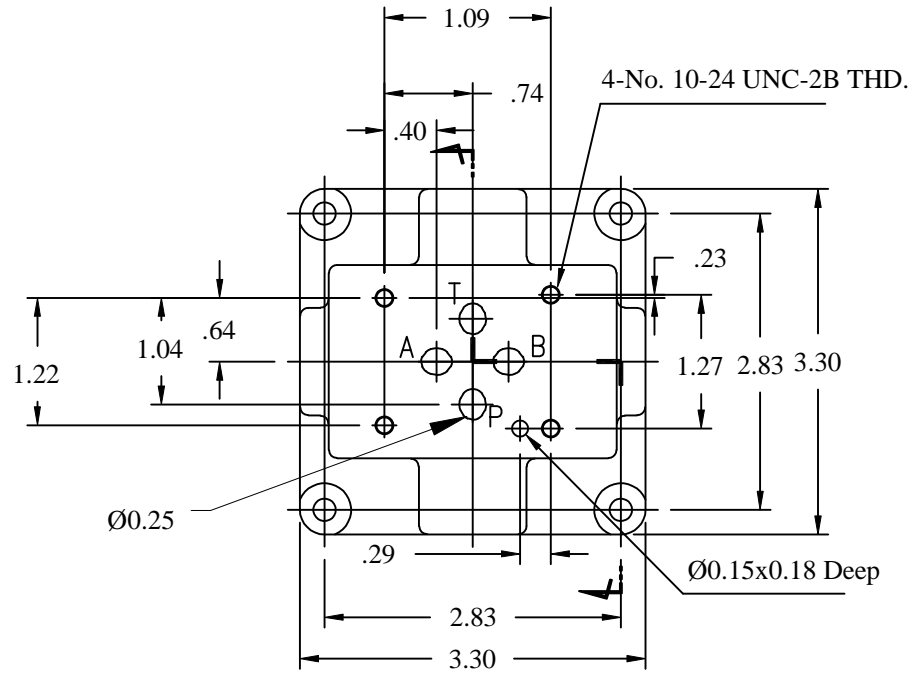
MODEL NO	PORT SIZE
DGSP03N-6	NPT 3/8 "
DGSP03S-6	SAE 3/8 "
DGSP03N-8	NPT 1/2 "
DGSP03S-8	SAE 1/2"

IFP DGSP03 SUBPLATES (Side Port)



DIMENSIONS (inches)

MATERIAL : STEEL CASTING



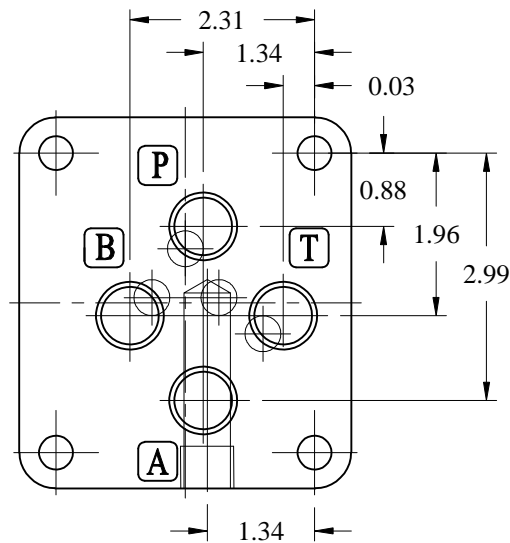
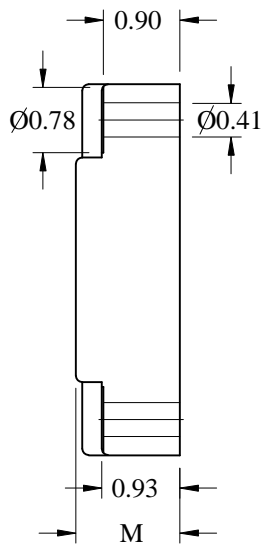
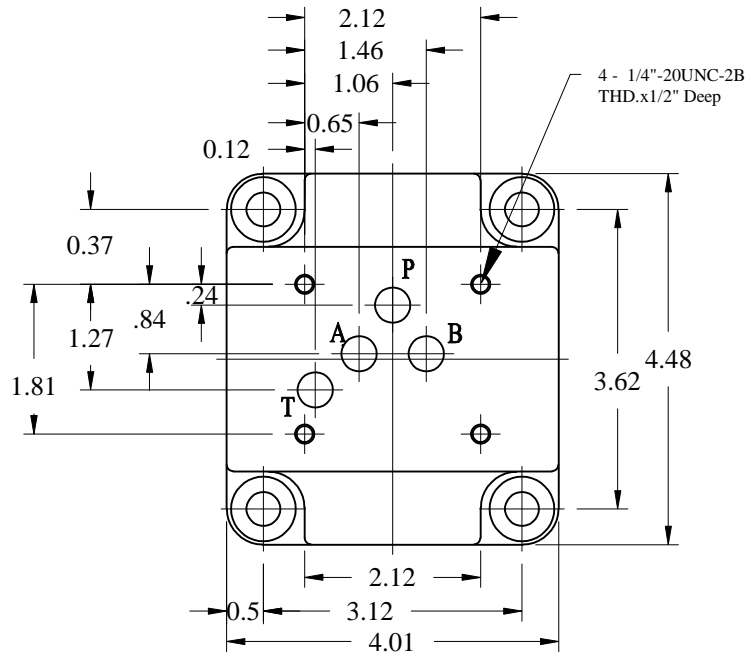
MODEL NO	PORT SIZE
DGSP03N-6E	NPT 3/8 "
DGSP03S-6E	SAE 3/8 "
DGSP03N-8E	NPT 1/2 "
DGSP03S-8E	SAE 1/2 "

IFP DGSP05 SUBPLATES (Bottom Port)



DIMENSIONS (inches)

MATERIAL : STEEL CASTING



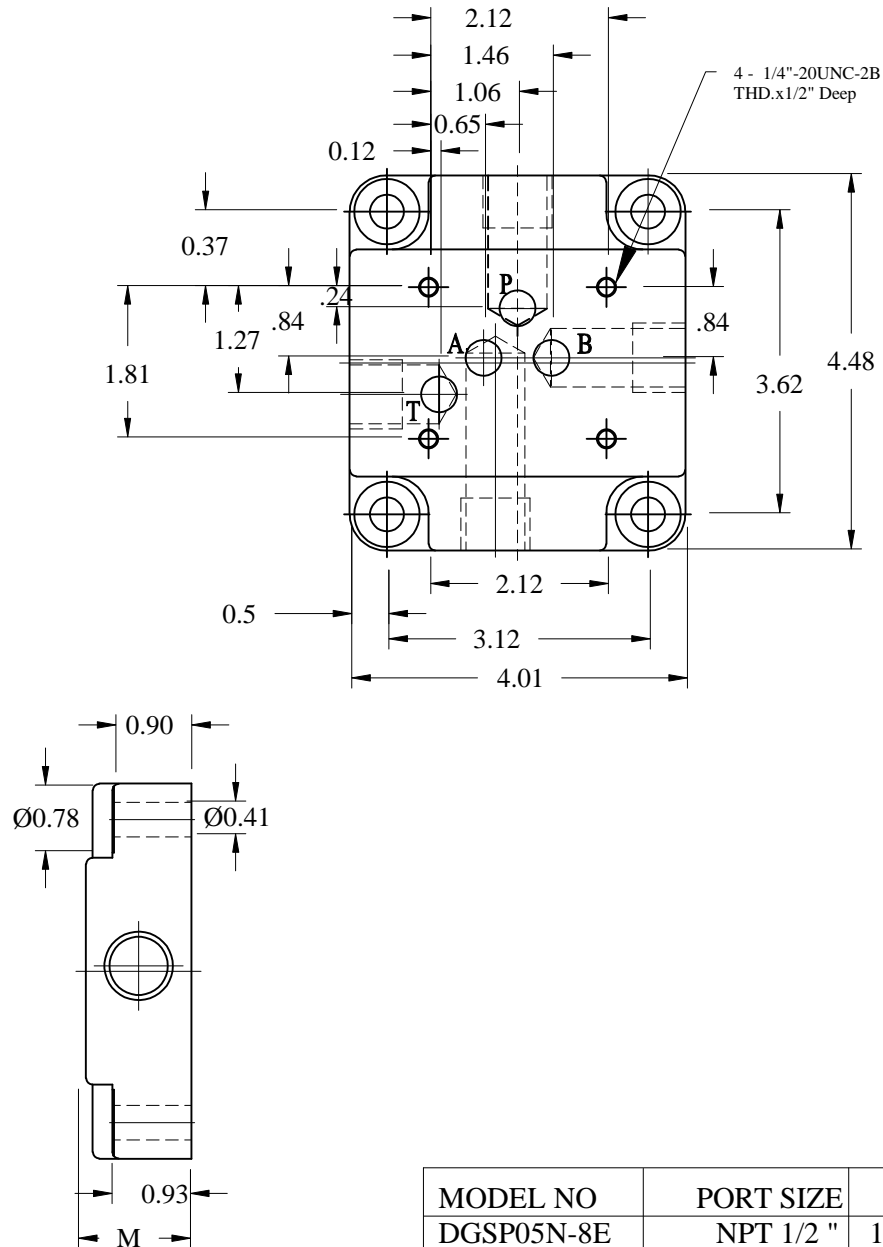
MODEL NO	PORT SIZE	M
DGSP05N-8	NPT 1/2 "	1.26"
DGSP05S-8	SAE 1/2 "	1.26"
DGSP05N-12	NPT 3/4 "	1.49"
DGSP05S-12	SAE 3/4"	1.49"

IFP DGSP05 SUBPLATES (Side Port)



DIMENSIONS (inches)

MATERIAL : STEEL CASTING



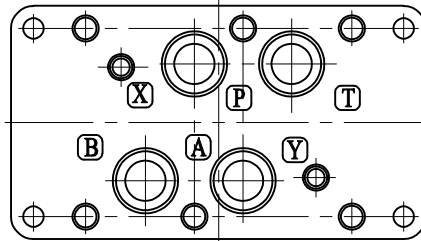
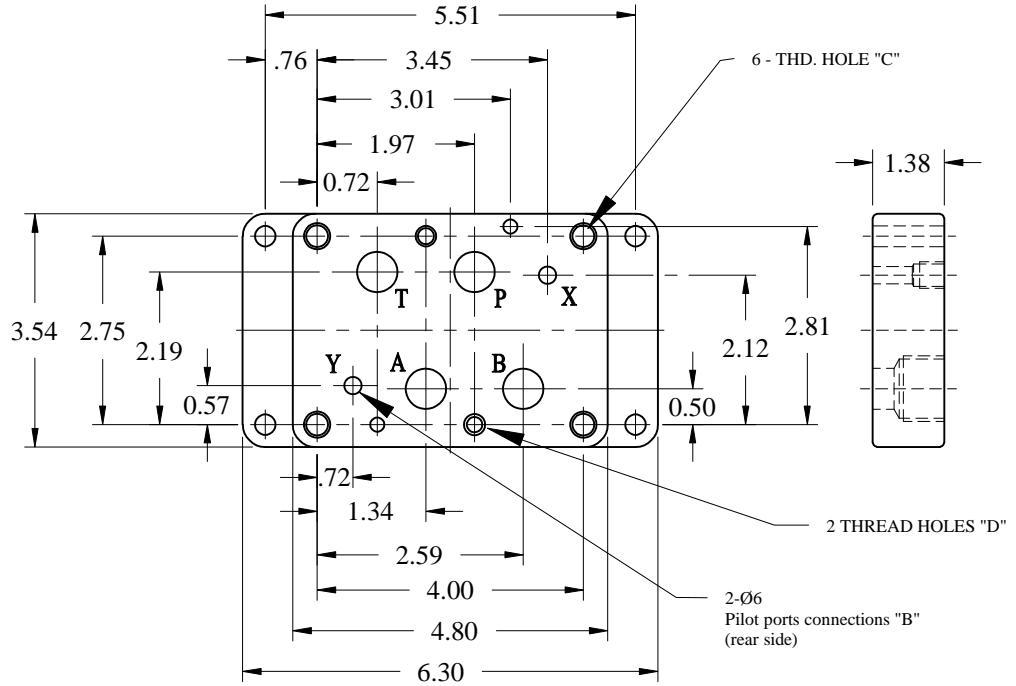
MODEL NO	PORT SIZE	M
DGSP05N-8E	NPT 1/2 "	1.26"
DGSP05S-8E	SAE 1/2 "	1.26"
DGSP05N-12E	NPT 3/4 "	1.49"
DGSP05S-12E	SAE 3/4 "	1.49"

IFP DGSP07 SUBPLATES (Bottom Port)



DIMENSIONS (inches)

MATERIAL : STEEL CASTING



MODEL NO	PORT SIZE	WEIGHT	B	C	D
DGSP07N-12	NPT 3/4"	6.61 LBS	NPT 1/4"	3/8" -16UNC-2B THD.x3/4" DEEP	1/4" -20UNC-2B THD.x9/16" DEEP
DGSP07S-12	SAE 3/4"		SAE 1/4"		
DGSP07N-16	NPT 1"		NPT 1/4"		
DGSP07S-16	SAE 1"		SAE 1/4"		

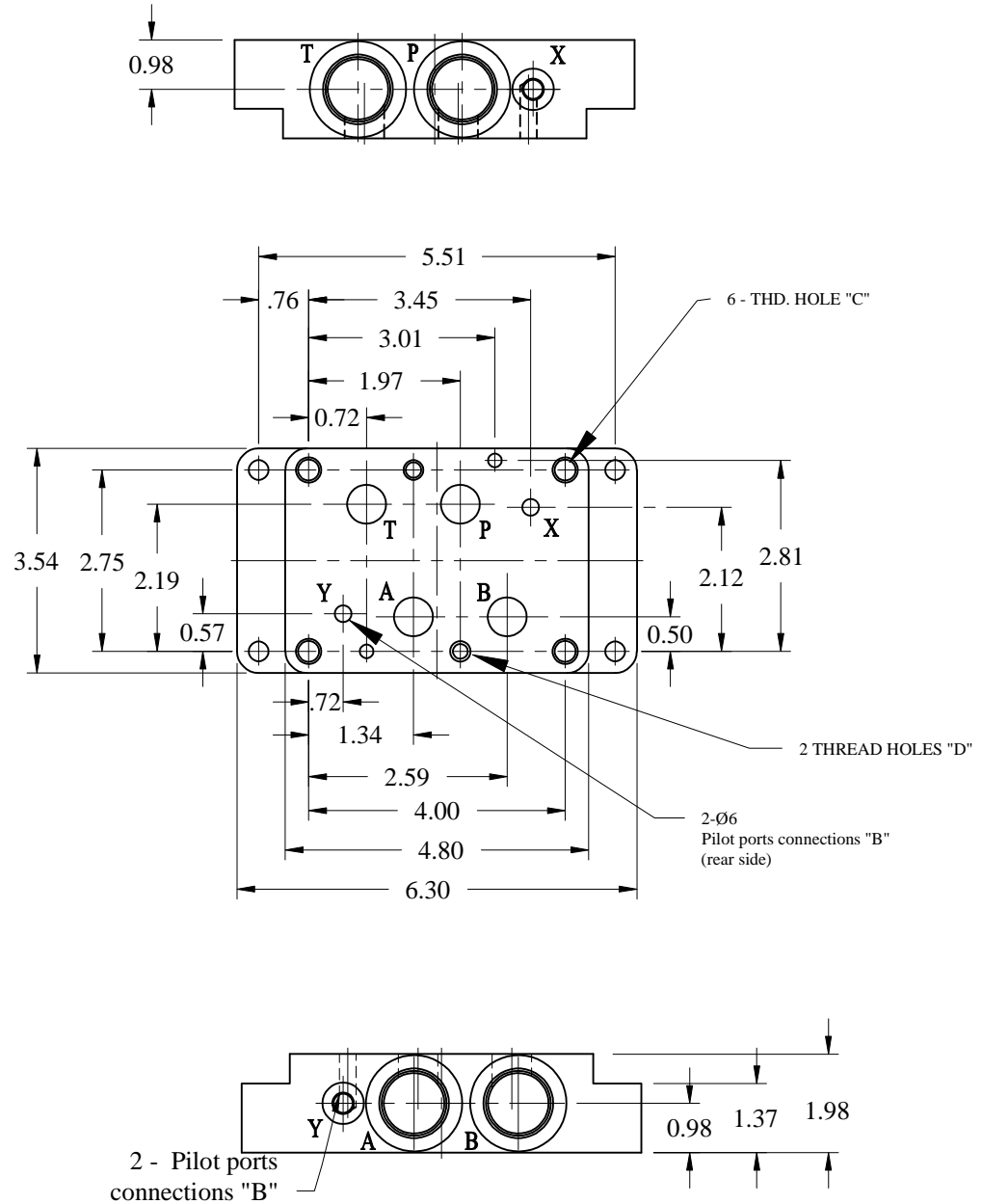
MODEL NO	PORT SIZE	WEIGHT	B	C	D
DGSP07-12	Rc 3/4"	6.61 LBS	Rc 1/4"	M10x19 DEEP(min)	M6x14 DEEP(min)
DGSP07G-12	BSP 3/4"		BSP 1/4"		
DGSP07-16	Rc 1"		Rc 1/4"		
DGSP07G-16	BSP 1"		BSP 1/4"		

IFP DGSP07 SUBPLATES (Side Port)



DIMENSIONS (inches)

MATERIAL : STEEL CASTING



MODEL NO	PORT SIZE	WEIGHT	B	C	D
DGSP07N-12E	NPT 3/4"	8.36 LBS	NPT 1/4"	3/8" -16UNC-2B	1/4" -20UNC-2B
DGSP07S-12E	SAE 3/4"		SAE 1/4"	THD.x3/4" DEEP	THD.x9/16" DEEP
DGSP07N-16E	NPT 1"		NPT 1/4"		
DGSP07S-16E	SAE 1"		SAE 1/4"		

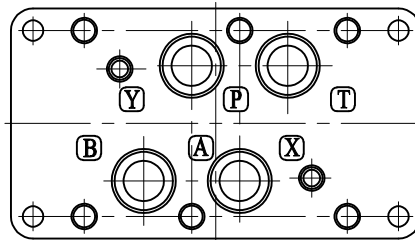
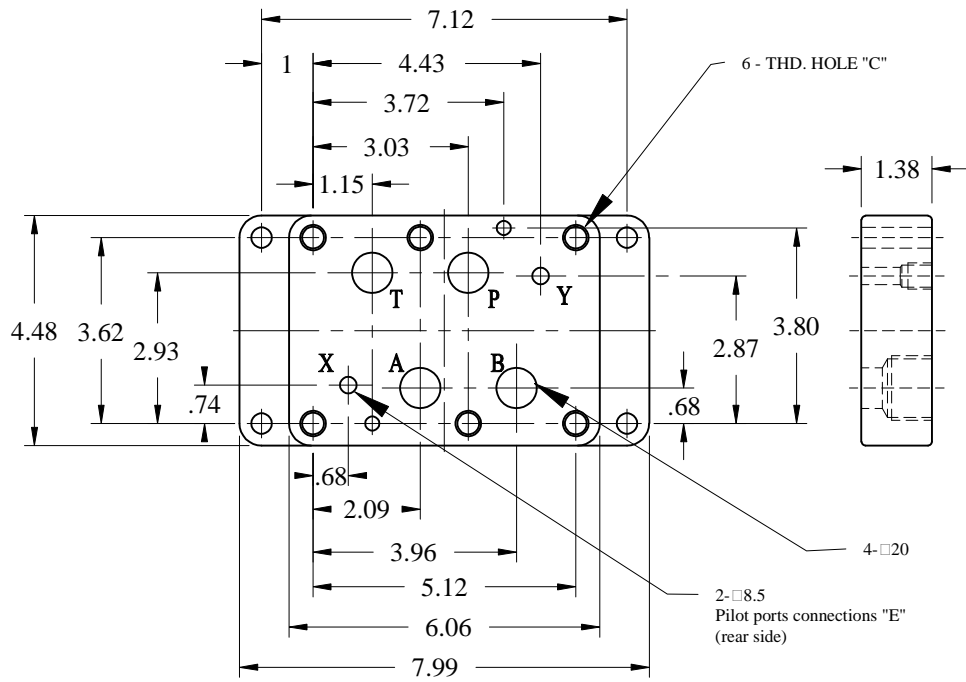
MODEL NO	PORT SIZE	WEIGHT	B	C	D
DGSP07-12E	Rc 3/4"	8.36 LBS	Rc 1/4"	M10x19 DEEP(min)	M6x14 DEEP(min)
DGSP07G-12E	BSP 3/4"		BSP 1/4"		
DGSP07-16E	Rc 1"		Rc 1/4"		
DGSP07G-16E	BSP 1"		BSP 1/4"		

IFP DGSP08 SUBPLATES (Bottom Port)



DIMENSIONS (inches)

MATERIAL : STEEL CASTING



MODEL NO	PORT SIZE	WEIGHT	E	C
DGSP08N-12	NPT 3/4"	10.56 LBS	NPT 1/4"	1/2" -13UNC-2B THD.x1" DEEP
DGSP08S-12	SAE 3/4"		SAE 1/4"	
DGSP08N-16	NPT 1"		NPT 1/4"	
DGSP08S-16	SAE 1"		SAE 1/4"	

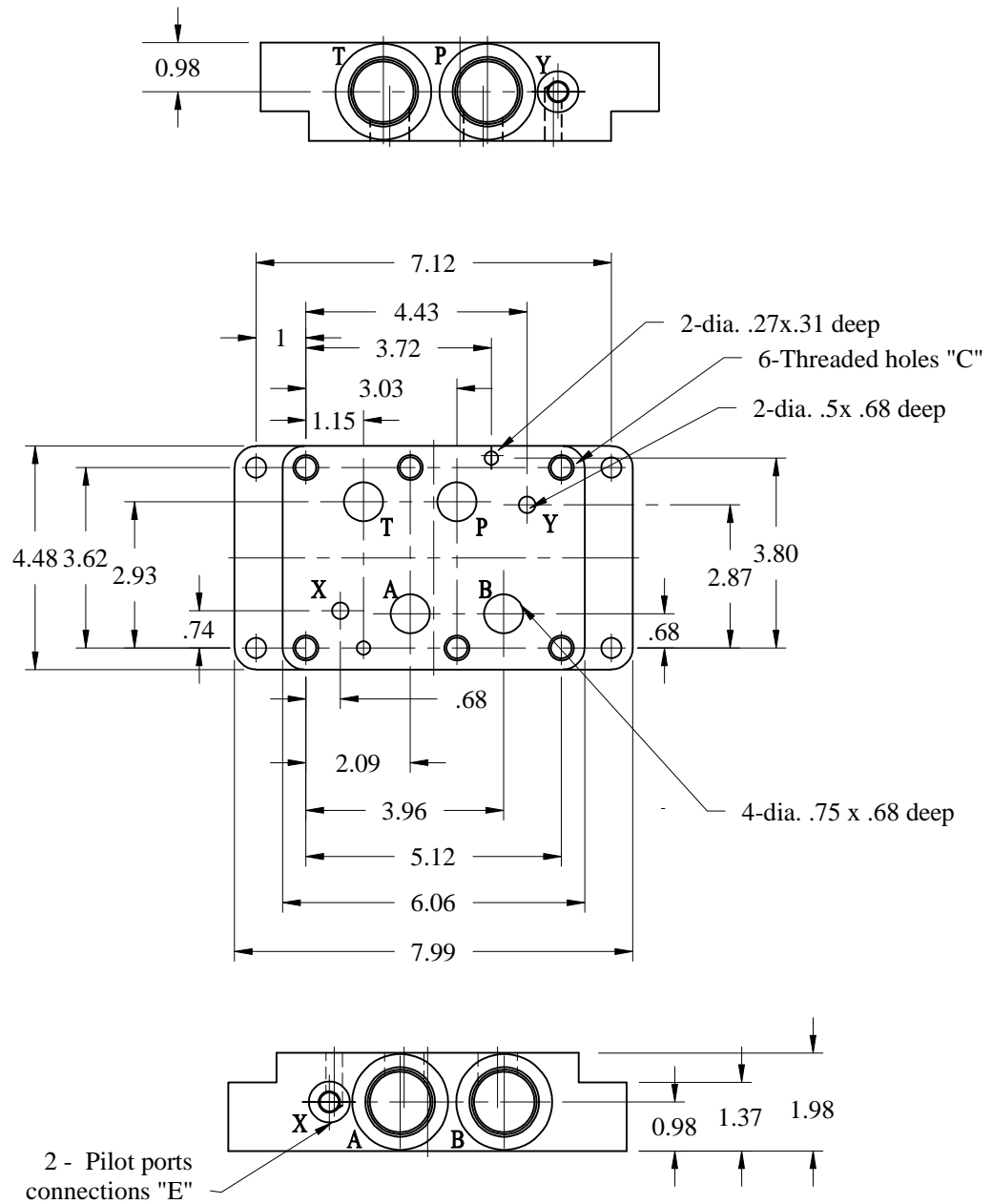
MODEL NO	PORT SIZE	WEIGHT	E	C
DGSP08-12	Rc 3/4"	10.56 LBS	Rc 1/4"	M12x25 DEEP(min)
DGSP08G-12	BSP 3/4"		BSP 1/4"	
DGSP08-16	Rc 1"		Rc 1/4"	
DGSP08G-16	BSP 1"		BSP 1/4"	

IFP DGSP08 SUBPLATES (Side Port)



DIMENSIONS (inches)

MATERIAL : STEEL CASTING

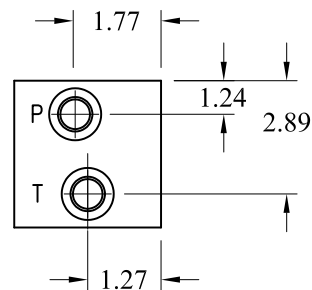
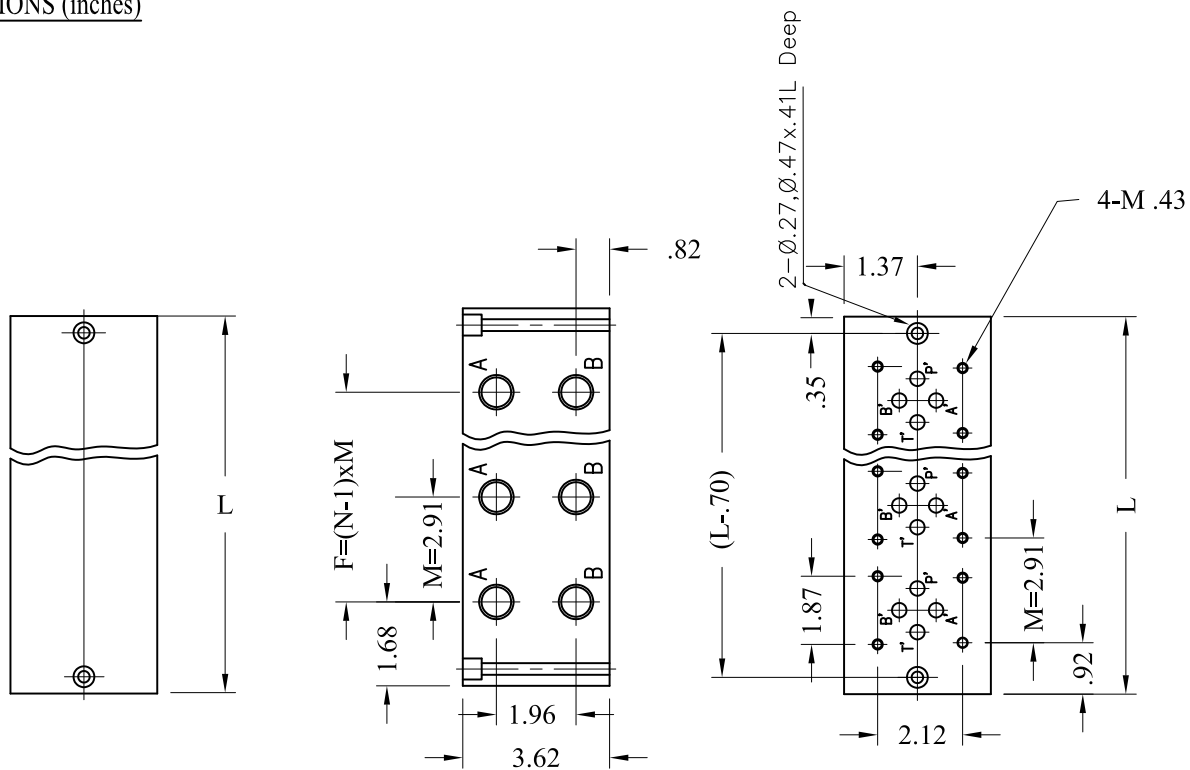


MODEL NO	PORT SIZE	WEIGHT	E	C	MODEL NO	PORT SIZE	WEIGHT	E	C
DGSP08N-12E	NPT 3/4"	10.56 LBS	NPT 1/4"	1/2" -13UNC-2B THD.x1" DEEP	DGSP08-12E	Rc 3/4"	10.56 LBS	Rc 1/4"	M12x25 DEEP(min)
DGSP08S-12E	SAE 3/4"		SAE 1/4"		DGSP08G-12E	BSP 3/4"		BSP 1/4"	
DGSP08N-16E	NPT 1"		NPT 1/4"		DGSP08-16E	Rc 1"		Rc 1/4"	
DGSP08S-16E	SAE 1"		SAE 1/4"		DGSP08G-16E	BSP 1"		BSP 1/4"	

IFP MFB05 PARALLEL MANIFOLD BLOCK



DIMENSIONS (inches)



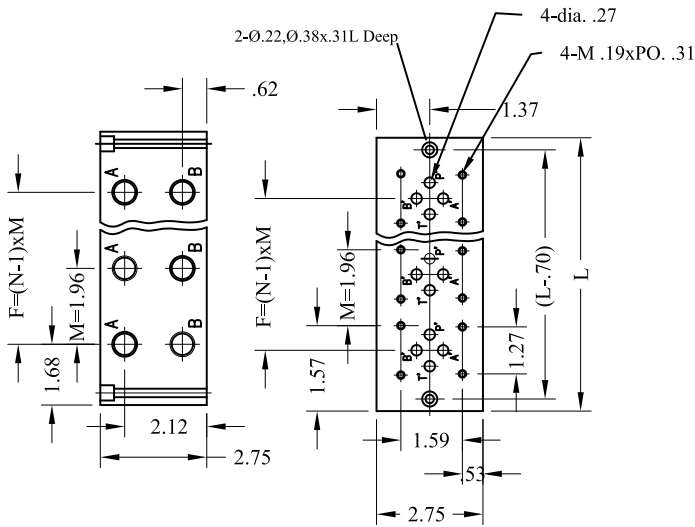
Mounting Dimensions

types	N	F	L	A	B	P	T	AB	PT
MFB-05-2-10N	2	2.91		NPT1/2"	NPT1/2"	NPT3/4"			
MFB-05-3-10N	3	5.82	9.21						
MFB-05-4-10N	4		12.12						
MFB-05-5-10N	5	11.99	15.03						
MFB-05-6-10N	6	14.56	17.95						
MFB-05-2-10S	2	2.91		SAE1/2"	SAE1/2"	SAE3/4"			
MFB-05-3-10S	3	5.82	9.21						
MFB-05-4-10S	4		12.12						
MFB-05-5-10S	5	11.99	15.03						
MFB-05-6-10S	6	14.56	17.95						

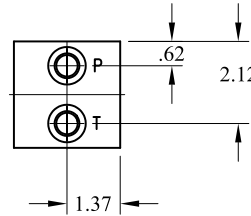
IFP MFS03/MFS05 SERIES MANIFOLD BLOCK



DIMENSIONS (inches)



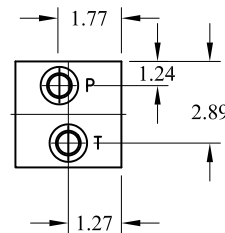
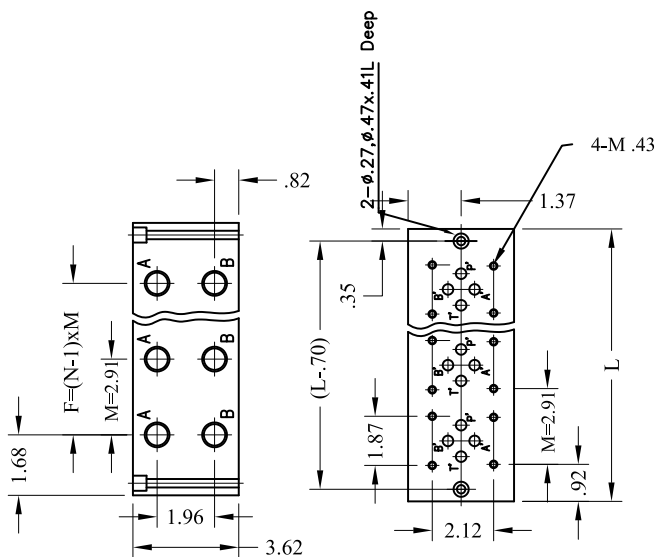
DIMENSIONS (inches) MFS03 SERIES



Mounting Dimensions

types	N	F	L	A	B	P	T	AB	PT
MFS-03-2-10N	2	1.96	5.11						
MFS-03-3-10N	3	3.93	7.08						
MFS-03-4-10N	4	5.90	9.05	NPT3/8"				NPT3/8"	NPT1/2"
MFS-03-2-10S	2	1.96	5.11						
MFS-03-3-10S	3	3.93	7.08						
MFS-03-4-10S	4	5.90	9.05	SAE3/8"				SAE3/8"	SAE1/2"

DIMENSIONS (inches) MFS05 SERIES



Mounting Dimensions

types	N	F	L	A	B	P	T	AB	PT
MFS-05-2-10N	2	2.91	6.30						
MFS-05-3-10N	3	5.82	9.21						
MFS-05-4-10N	4	8.39	12.12	NPT1/2"				NPT1/2"	NPT3/4"
MFS-05-2-10S	2	2.91	6.30						
MFS-05-3-10S	3	5.82	9.21						
MFS-05-4-10S	4	8.39	12.12	SAE1/2"				SAE1/2"	SAE3/4"